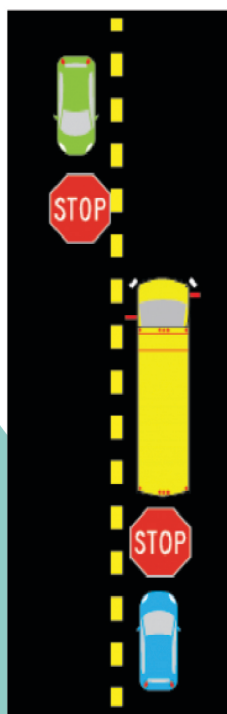


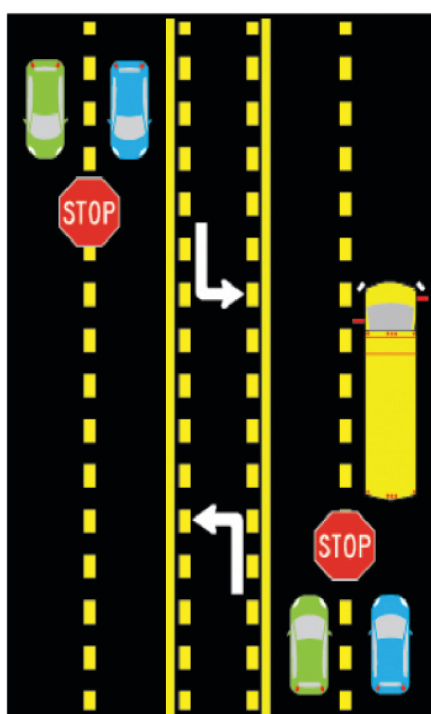
School starts Monday, August 12



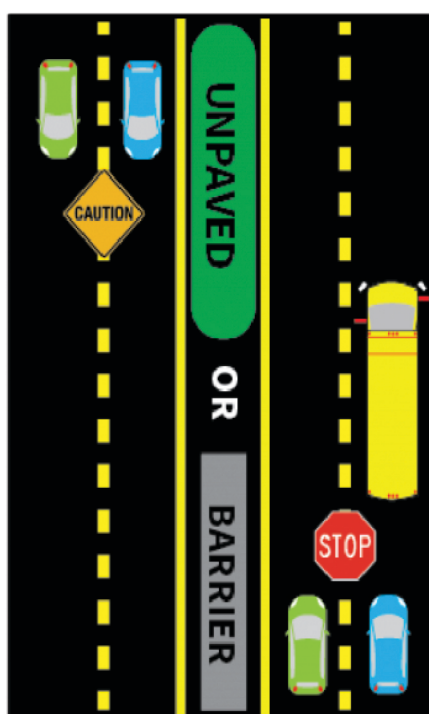
Please watch out for our kids
and drive safely.



TWO-LANE
Vehicles traveling
in both directions
MUST stop.



MULTI-LANE Paved Across:
Vehicles traveling in both directions
MUST stop.



DIVIDED HIGHWAY
Unpaved space (Min. 5 ft.), OR, any
raised median or physical barrier.
Vehicles behind bus MUST stop. Vehicles
traveling in the opposite direction proceed
with caution.

SCHOOL BUS FACTS

In a 180-day school year, it is estimated that there are almost 2 million illegal "pass-by's" of Florida school buses, each representing the possibility of tragic injuries or fatalities to students.

Florida Motor Vehicle Laws require that motorists stop upon approaching any school bus that displays its flashing red lights and has its stop signs extended. Penalties for breaking these laws can include fines, points against your license, and even suspension of your license.

Florida law specifies when you must stop for school buses. If you violate the law you commit a moving violation, for which the penalty may include:

- Payment of a minimum civil penalty of \$165 and incur 4 points against your driver's license.
- Complete a basic driver improvement course.
- A second offense within five years may result in the suspension of your driver's license for at least 90 days.
- An illegal pass on the side of the bus where students enter and exit the bus will result in severe penalties, ranging from a minimum fine of \$265 and up to one year license suspension.



Remember:

The inconvenience of an
extra few seconds waiting
for a stopped school bus is
insignificant compared to the
loss of a child's life.

*This message sponsored by
the Taylor County School District Transportation Department and the following businesses.*



Big Bend Marine

3482 Hwy. 19 S. Perry, Fl.
850-584-5977



BCFCU
BUCKEYE COMMUNITY
FEDERAL CREDIT UNION

"Community Minded Just Like You"

1825 S. Jefferson St.
Perry, FL 32348



(850) 223-7100
www.bcfcu.coop

FRITH ABSTRACT & TITLE COMPANY

501 N. Byron Butler Pkwy.
P.O. Box 515
Perry, FL 32348

Telephone

(850) 584-2672

Fax

(850) 584-8841



OYSTERS
Call to reserve your
Pint or Bushel

Tues. - Sat. 11 a.m. - 9 p.m.
Closed Sun. & Mon.

Deal's Famous Oyster House

2571 West U. S. 98

Fresh Seafood, Steaks, Chicken & More

Family Restaurant Owned & Operated
Zodie Horton, "The Real Deal"

Join us for LUNCH & DINNER
Dine-In or Take-Out 850 838-DEAL (3325)

"The Finest People in the World Come Through Our Doors"



- Passenger cars • Trucks • Farm tractors • Outboard motors
- Imported cars • Small engines • Machine shop service
- Tools & mechanics supplies

PERRY AUTO SUPPLY, INC.

1107 S. Jefferson St. 584-2118

Mims Power Center, Inc.



Sales & Service



414 W. Hampton Springs Ave.

(850) 584-6733

Tues.-Fri. 8:30-5:00 p.m.

- Trimmers
- Blowers
- Chainsaws
- Power Pruners
- Pole Saw



DENNIS Locksmith Service

Automotive • Keys • Chip Keys • Safes

Office hours: Tues.-Fri. 10 a.m.-4 p.m.
Telephone & Fax (850) 584-7327

Owners:

Kenneth & Carmen
Dennis

1103 Hwy. 98 west, Perry
dennislocksmith53@gmail.com

AW-SHARE'S Total Floor Restoration

Carpet, Tile, Hardwood Floors, Cleaning,
Janitorial Services and Supplies

William Black
Owner
H833

(850) 838-2805

(850) 843-1639

awshares.wb@gmail.com

awsharestotalfloorrestoration.com

2089 San Pedro Rd • Perry, FL